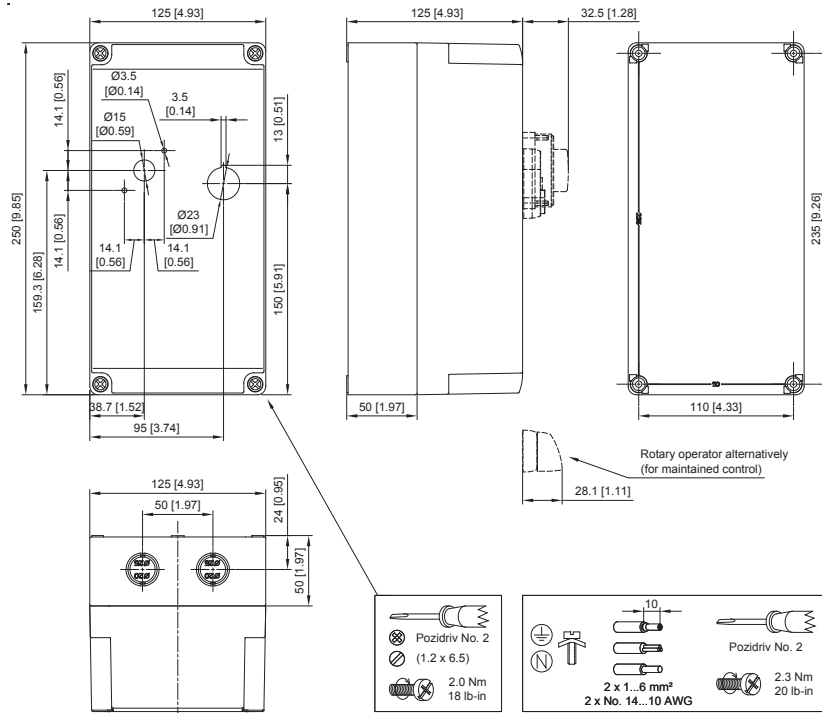


**CX7/CXU7 KWIKstarter Enclosure KS7-COC4R (Dimension Code Q4)**

Dimensions are in decimal inches. Dimensions not intended for manufacturing purposes.



**Enclosure Dimensions**

Dimensions are in decimal inches. Dimensions not intended for manufacturing purposes. See dimension drawings on next page.

**IP65 ENCLOSURE**

Encl. ID Dim.	Figure No.	Enclosure Size			Mtg Depth D	Mtg Centers		Panel Size Sub-Pan	
		A	B	C		E	F		
AY	1	5.91	3.54	5.12	N/A	N/A	5.32	N/A	N/A

**TYPE-4/4X/12 ENCLOSURE**

Encl. ID Dim.	Figure No.	Enclosure Size			Mtg Depth D	Mtg Centers		Panel Size Sub-Pan	
		A	B	C		E	F		
Q5	2	7.00	5.03	5.02	4.3	4.21	6.18	N/A	N/A
Q6	3	7.00	7.00	6.02	5.3	6.18	6.18	N/A	N/A
Q7	4	11.87	7.31	10.6	7.23	6.54	11.10	N/A	N/A

**TYPE-4/12 & 12 ENCLOSURES**

Encl. ID Dim.	Figure No.	Enclosure Size			Mtg Depth D	Mtg Centers		Panel Size Sub-Pan		H
		A	B	C		E	F			
W6	5	9.84	7.87	8.24	5.31	5.31	9.13	9.09	7.13	-
W7	5	13.78	11.81	10.2	7.28	9.25	13.07	13.03	11.06	-
L	6	8	6	6	5.53	4	8.75	6.75	4.88	9.5

**TYPE 4/7/9 ENCLOSURES**

Encl. ID Dim.	Figure No.	Mtg. Dim.			Inside Dim. D	Outside Dim.				Conduit Entry Top & Bot
		A	B	C		E	F	G	H	
EX	7	3.25	7.75	3.5	6.0	3.0	4.56	7.06	6.25	0.75
EY	7	5.50	8.50	5.50	5.50	6.0	7.0	7.0	8.84	1.0
EZ	8	9.13	4.50	6.0	8.0	6.63	9.25	11.25	9.34	1.50

**F** Enclosed Motor Circuit Controllers