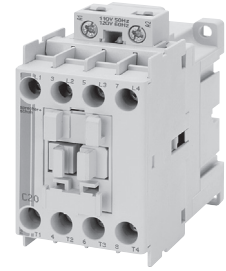


### Lighting Contactors with AC Coil ④⑤

Type of Load	Continuous Ampere Rating ③	Max. AC Volts, Poles to Load		# of Poles	Standard Auxiliary Contacts		Holding Type	Open Type Catalog Number	Price
		1 for 1Ø	3 for 3Ø		NO	NC			
Tungsten or Ballast	20	277	480Y/277V	4	0	0	Electrical	<b>CAL7-20-M40-*</b>	<b>284.01</b>
	15	347	600Y/347V				Mechanical	<b>CAVL7-20-M40-*-L10 ①</b>	<b>551.42</b>
General	30	600	600						
Tungsten or Ballast	30	277	480Y/277V	4	0	0	Electrical	<b>CAL7-30-M40-*</b>	<b>419.79</b>
	25	347	600Y/347V				Mechanical	<b>CAVL7-30-M40-*-L10 ①</b>	<b>621.91</b>
General	37	600	600						
Tungsten or Ballast	60	277	480Y/277V	4	0	0	Electrical	<b>CAL7-60-M40-*</b>	<b>712.08</b>
	55	347	600Y/247V				Mechanical	<b>CAVL7-60-M40-*-L10 ①</b>	<b>873.78</b>
General	85	600	600						

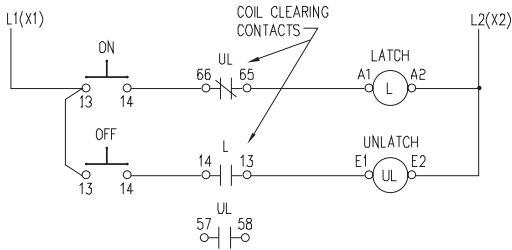


**Description**  
The CAL7 electrically held contactors and CAVL7 mechanical held contactors are cUL rated and labeled for tungsten and ballast lighting duty applications at 20, 30, and 60 amperes respectively.

Larger sizes available. Contact your Sprecher + Schuh representative. See catalog page C44 for enclosed lighting contactors.

#### Operation of Mechanically Held Contactor with “ON-OFF” Pushbutton

Catalog number “CAVL7” consists of a CAL7 contactor with CV7-11 mechanical latch. Depressing the “ON” button energizes the “L” coil and the contactor closes. The mechanical latch locks the contactor in the closed position. The “L” coil is then de-energized by the coil, clearing contact “UL” (Terminals 65-66) to remove voltage. Depressing the “OFF” button energizes the “UL” coil, and the mechanical latch releases the contactor. The “UL” coil is immediately de-energized by the coil clearing contact “L” (Terminals 13-14) to remove voltage. The contactor is now open.



#### CA(L)7 Coil Codes ②

AC Coil Code	Voltage Range	
	50 Hz	60 Hz
<b>24Z</b>	24V	24V
<b>120</b>	110V	120V
<b>208</b>	~	208V
<b>220W</b>	~	208V-240V
<b>240</b>	220V	240V
<b>277</b>	240V	277V
<b>380</b>	380V-400V	480V
<b>480</b>	440V	480V
<b>600</b>	550V	600V

#### Ordering Instructions

Specify Catalog Number	
Replace (*) with Coil Code	<b>See Coil Codes on this page.</b>

- ① The N.O. auxiliary on the mechanical latch is used by the control circuit and is not available to the customer for other uses.
- ② Other voltages available, see page A56.
- ③ Engineering practice permits  $2.5 \times I_n$  to be applied to a contactor when 3 poles are connected in parallel for single phase discharge lamp (ballast lighting) applications. For example CAL7-20-M40-\* Lighting Contactor plus a CA7-P-B23 Paralleling Link can be used on a 50A ballast load. Applying parallel conductors to incandescent lamp loads does NOT result in a greater permissible load. Paralleling Links can be found in the Accessories section.
- ④ Lighting contactor applications greater than 4-poles can be achieved. Contact Sprecher + Schuh representative for assistance.
- ⑤ Definite Purpose Contactors can also be used in Lighting Contactor applications. See page A183.