



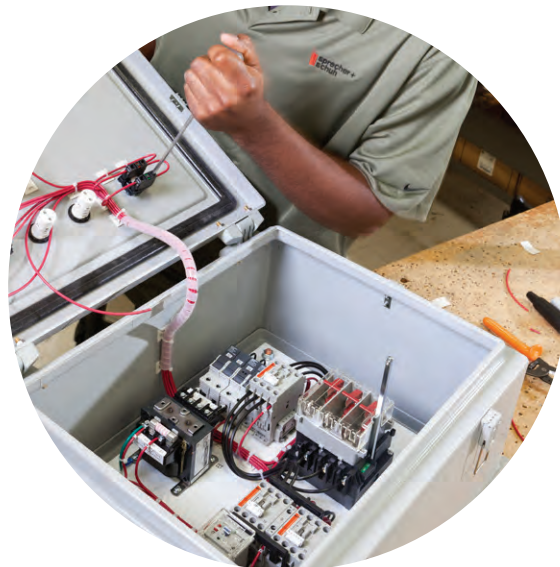
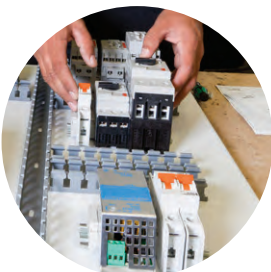
### **Need Control Panels? You Got It**

Sprecher + Schuh is your go to builder for standard and custom motor control panels. Our panel shops are UL508A, UL1203 and cULus approved. This means our knowledgeable team can design your panel for standard and custom applications to meet cULus and CE standards. Our engineering and custom quotes staff works with the customer one-on-one in designing a motor control panel that best fits the customers' needs.

We continue to develop innovative, new products and improve existing designs. We constantly strive to maintain a superior level of service including maintaining an ISO 9001 certification. Our panel shop is designed to accommodate our customers' needs. We stock not only Sprecher + Schuh components but also MCCB and enclosures in a variety of sizes and types (metallic and non-metallic). This means we can quickly design, assemble, wire, and ship a variety of control panels.

### **What Can We Build For You?**

Regardless of your industry or custom control panel needs, we at Sprecher + Schuh have the engineering experience and manufacturing facilities to design and build your panels. Whether your need is to design an OEM panel that will be repeated, or a one-of-a-kind, we have an experienced engineering and quality control team dedicated to providing the best solution for your custom control panels. Our manufacturing facilities in the USA and Canada are staffed with experienced wiring and installation technicians, ensuring your control panel meets safety and performance criteria. Through this commitment to service, and never-ending attention to detail, we continue to be the first and last words in industrial motor control and protection.





We take great pride in being a UL508A and ISO9001 certified panel shop. Our value added services are coupled with outstanding quality assurance, from receiving product into the warehouse, during assembly, and before a product leaves the shipping dock.

### ISO 9001: Your Assurance of Quality

Sprecher + Schuh is proud to be an ISO 9001 certified company. What does this mean for you and your customer? It means we meticulously document every panel we build, from the engineering schematics, the assembly checklist and the final energizing quality test. This thorough documentation assures that at any time we can look up that panel, and provide the documentation to troubleshoot any issues or make modifications to the panel.

The ISO 9001 also ensures ongoing quality and innovation. We are always striving for improvement and the highest customer satisfaction. You can count on it.



### UL508A and 1203 Certifications

Being certified as a UL508A Panel Shop means all assemblies are automatically built to UL standards. Full labeling is available upon request at time of quotation and order placement. A UL508A label ensures your panel will meet the standards required of it.

UL1203 (NNNY) is a safety standard for explosion-proof and dust-ignition-proof electrical equipment for use in hazardous (Classified) Locations

To be certified to apply a UL1203 (NNNY) label to a hazardous location assembly the shop must be UL508A certified. The electrical portion of the panel is built to UL508A standard. Once the electrical design is completed a determination of the Hazardous location suitability is assigned based on the rules and regulations in the UL1203 (NNNY) certification.

### Thorough Testing and Inspection

Every shipment we receive is inspected at the dock for quality and accuracy. Every control panel is inspected during build up by the assembler and upon completion by an in house quality inspector. We have two dedicated testing facilities to energize control panels in a variety of voltages for final inspection.

### Third Party Witnessing

Our facilities also offer Third Party Witness testing upon request. You or your customer can physically witness the testing procedures of the control panel. Scheduling and a written test procedure is all we require.

### Experienced Staff

One of the things that makes the Sprecher + Schuh panel shop the best choice for your control panel is our experienced staff. Our engineering staff has many years of experience working with electrical standards and a variety of industrial applications. On average our assembly staff have over 7 years of experience with us. They are trained to handle any assembly, from small kits to large custom panels.

We also have a flexible work cell environment. Our workstations are designed to accommodate one-piece flow; yet can be adjusted to handle up to four people at one station to process large jobs. This is especially important for our HVAC program, where one order may require 75 starters. We also have the ability to bring in experienced contract labor when required to guarantee we get the job done on time.



### Dedicated Inventory

Sprecher + Schuh panel shops have dedicated inventory to expedite panel assembly. The Houston facility alone has \$1.5 million in dedicated inventory to ensure your panel can be assembled quickly and shipped to you as soon as possible. Standard components are stocked and readily available for assembly into standard and custom panels. We stock a large variety of standard enclosures, which is especially beneficial for our hazardous location customers.

### STANDARD

- Open or enclosed assemblies in Type 1, 12, 3R, 4, 4X or 7/9 enclosures
- Non-Combination starters
- Combination Fusible, Non-Fusible & MCCB
- KWIKstarters
- Manual Motor Controllers
- Soft Starters
- Disconnect Switches
- Push Button Stations
- Almost any standard components in one of our standard enclosures in as few as 5-10 working days

### CUSTOM

We have excellent relationships with industrial suppliers to get you the type of products your application needs. We can also work with customer supplied components.

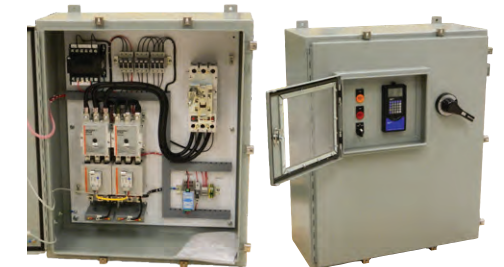
Our engineering staff can offer technical advice and recommendations, as well as design your control panel to include specified third party equipment you need in it. For example, we can install VFD and PLC equipment to be programmed/setup by the customer. We will give you a timely quote with an accurate assembly time.

Whether you need a single starter in a simple metal enclosure, 10 soft starters in stainless steel with a door in a door, or 100 custom explosion proof controllers for the harshest environment, we have the resources and know how to make it happen.

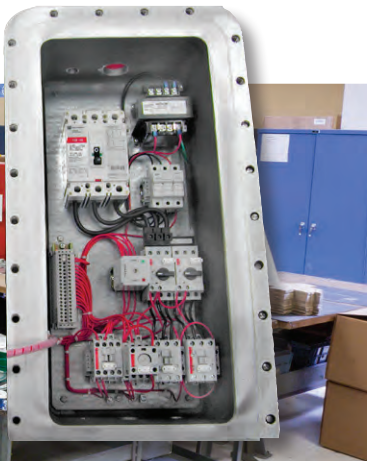
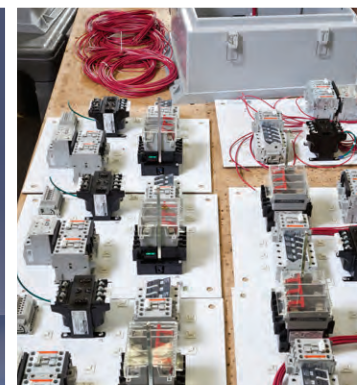
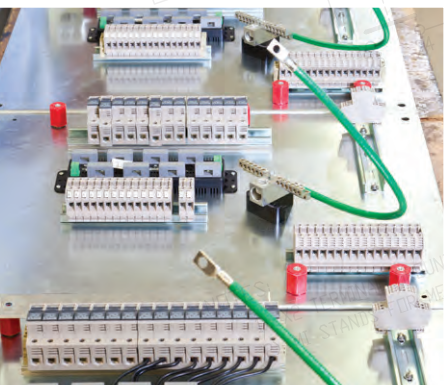


### HVAC PROGRAM

- Special selection of standard starters specifically configured for the Heating, Ventilation and Air Conditioning Industry
- Type 1 and 3R enclosures
- Combination and Non-combination starters
- Includes many standard options such as fireman/damper or installed fuses
- Assembled in 5 days for quick availability
- Available only to specialty and full line distributors



- Custom built to your specifications
- Multi-Motor Starter Panels
- Combination & Non-Combination Motor Starters
- Reduced Voltage Starters
- Soft Starter Panels
- Simplex & Duplex Pump Panels
- Door-in-Door Panels
- UL508A/cULus Labeled Custom Panels
- Service Entrance Rated Panels
- And many more





## We've Done It All

Name any industry in the world and we have probably built something for it. From domestic fresh fish farms to deep sea oil rigs and everything in between, the Sprecher + Schuh engineering and panel shop teams have designed and built motor controls and panels the world over. Here are some examples of industries we serve every day.

**Car Wash**

**Cranes**

**Portable Power Washers**

**Paint Booth**

**Agricultural Machinery**

**Food Industry**

**Fresh Fish Farms**

**Waste Water Management**

**Hazardous Location Applications**

**Rock Crushers**

**Elevators**

**Heating, Ventilation & Air Conditioning**

**Pharmaceutical**

**Conveyors & Packaging**

**Dust Control and Mitigation**

**Pumping and Separation Stations**

**Textiles**

**Oil & Gas**

**Distilleries**

**Wood Shop Classrooms**



**What can we build for you?**  
Contact your Sprecher + Schuh representative  
for complete details or to ask for a quote.

Contact your Sprecher + Schuh representative for more information.  
For more information visit [sprechershuh.com](http://sprechershuh.com)