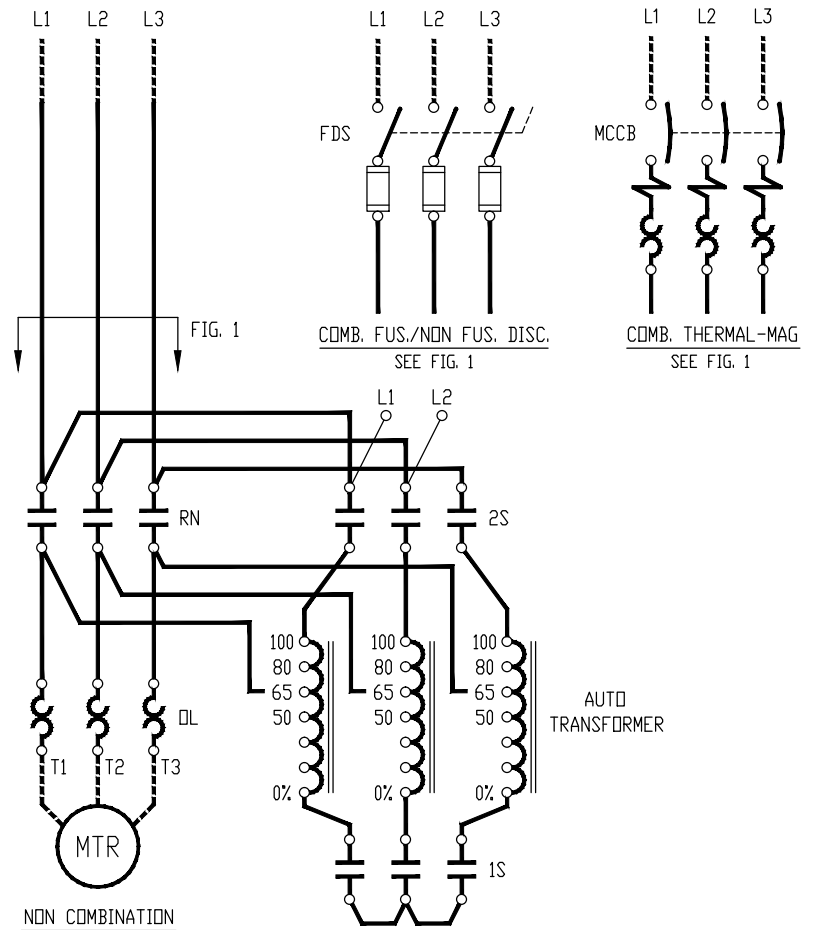


ATTENTION:  
ALL STARTERS ARE NORMALLY  
CONNECTED TO 65% TAP AT  
THE FACTORY

NOTES:

- 1). ATP: STANDS FOR AUTO TRANSFORMER THERMAL PROTECTION.
- 2). X2 TERMINAL GROUNDED AS STANDARD, REMOVE IF NOT REQUIRED.
- 3). MI STANDS FOR MECHANICAL INTERLOCK.
- 4). TIMING RELAY TR: CS7-22E+CZE7-30S.



3	GENERAL REVISION	4-24-12	MR
REV	DESCRIPTION	DATE	APP'D
DESIGNED EAP	REDUCED VOLTAGE STARTER AUTO-TRANSFORMER TYPE START-STOP PUSHBUTTON W/ OPTIONAL OFF-RUN PILOT LIGHT	<b>sprecher+schuh</b> HOUSTON, TEXAS DWG. NO. CAAT WS-105-01      SERIES 100	
DRAWN EAP			
APPROVED PAB			
DATE 12-87			