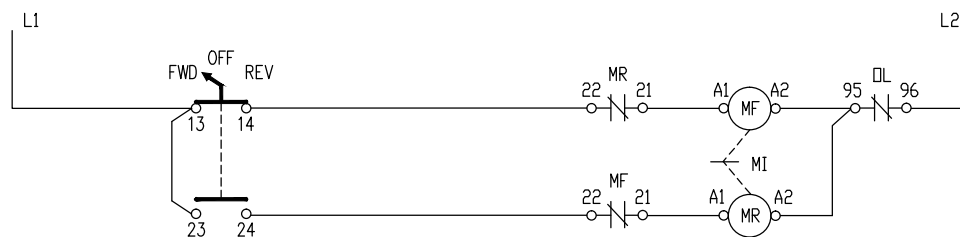


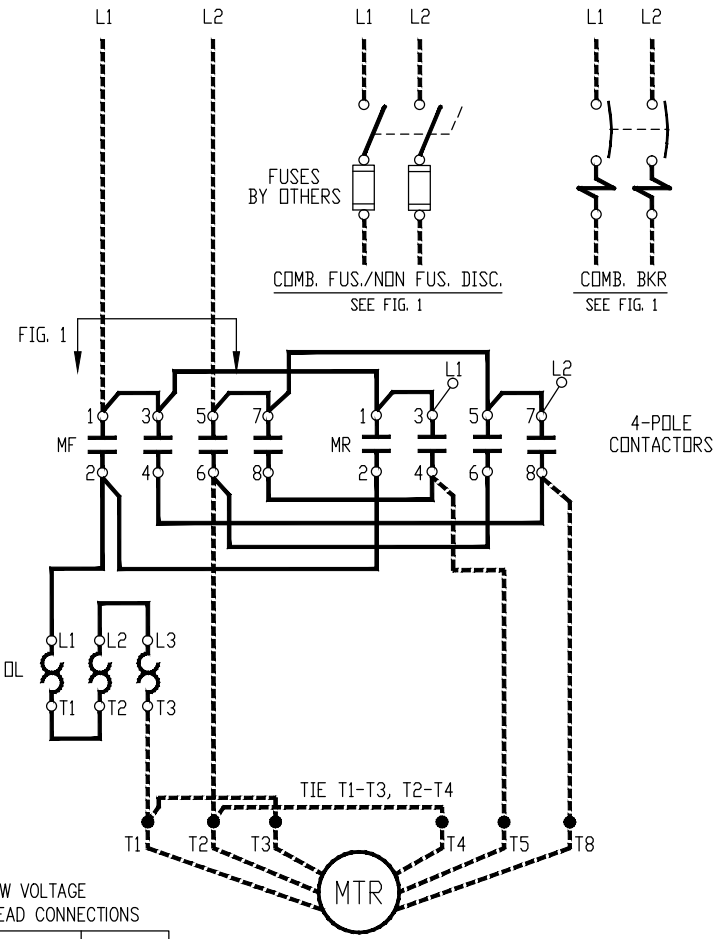
FORWARD STOP REVERSE PB



FORWARD OFF REVERSE SEL. SW.

NOTES:  
1). MI STANDS FOR MECHANICAL INTERLOCK.

CUSTOMER MUST PROVIDE  
PROPER BRANCH CIRCUIT PROTECTION  
(USE 75°C COPPER WIRE ONLY)



LOW VOLTAGE  
MOTOR LEAD CONNECTIONS

ROTATION	L1	L2
CCW (FOR)	T1, T3 T8	T2, T4 T5
CW (REV)	T1, T3 T5	T2, T4 T8

1-PH REVERSING 6-LEAD  
CAPACITOR START MOTOR

-	-	-	-
-	-	-	-
-	-	-	-
-	-	-	-
REV	CHANGE	DATE	BY

**NOTICE**  
THIS DRAWING IS THE CONFIDENTIAL PROPERTY OF SPRECHER+SCHUH, INC. and, as such, is subject to recall at any time. The drawing may not be reproduced, used or disclosed for any purpose except as authorized by SPRECHER+SCHUH, INC.

DRAWN BY:  
JR  
CHECKED BY:  
JR  
APPROVED BY:  
JR  
DATE  
2-28-07

FULL VOLTAGE REVERSING  
MAGNETIC STARTERS  
SINGLE PHASE - LOW VOLT CONN.  
6-LEAD CAPACITOR START MOTOR

**sprecher+schuh** HOUSTON, TEXAS  
DWG. NO. CBUT WS-104-36 SERIES 100